

New!

Clear View II Van Rear Window Defrosters



www.frostfighter.com



Van Defrosters

Clear View Van Defrosters reliably melt snow and ice even in the coldest winter conditions.

Now it is easy to install defrosters with proven heating performance and a professional factory look.

Van Rear Window Defrosters

Clear View II Electric Defrosters make it easy to install high quality defrosters on Van rear windows. Clear View Van Defrosters deliver the heating performance needed to keep Van windows free of snow and ice for safe winter driving.

Delivered complete

Clear View defrosters include everything needed to install a complete defroster including the ThermaSync controls, wire harness and installation kit.

Spaced for easy application

Clear View self-adhesive heating elements come on pre-spaced rolls for easy and accurate application directly to the window. These heating elements are trimmed to size during installation and match the color of factory defrosters.



ThermaSync Defroster Controls

Defroster controls with smarts

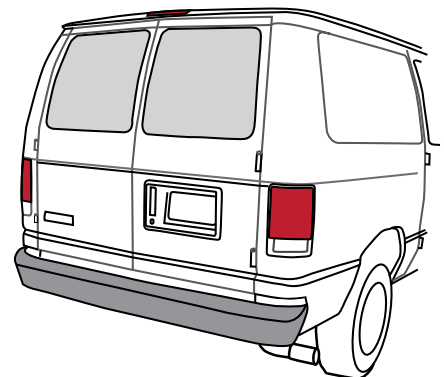
Clear View defrosters use our ThermaSync defroster controls and switch. This allows single switch operation of the two defrosters plus a range of automatic timing options from ten minutes to continuous operation.

The defroster is connected electrically through the buss bar tabs to the vehicles power and ground, then activated with the automatic ThermaSync defroster control.

Defrosters made simple

Clear View Van Defrosters fit most van rear door glass including...

- ✓ Nissan NV
- ✓ Mercedes Sprinter
- ✓ Ford Econoline
- ✓ Chevrolet Express
- ✓ Most others!



Defroster Technology



Planned Products LLC

4699 Nautilus Court S.

Suite 201

Boulder, CO 80301

Tel: 303.682.0274

E-mail: info@frostfighter.com

Web: www.frostfighter.com

Frost Fighter® Clear View II Defrosters made easy

www.frostfighter.com

Defrosters for Van rear doors

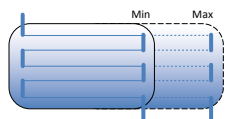


Clear View defrosters keep the back windows of vans clear of frost

Clear View Van Defrosters deliver the heating performance needed to keep Van windows free of snow and ice for safe winter driving. Cost effective and easy to install, these new defrosters bond directly to the window to match the heating performance of factory installed defrosters, melting snow and ice in minutes.

How Clear View defrosters work

Defrosting is accomplished through contact between the Clear View elements and the window. The defroster is connected electrically through the buss bar tabs and activated with the automatic ThermaSync defroster control and switch.



Easy Application

The heating elements come on pre-spaced rolls which are trimmed to length for a custom fit. The self adhesive heating elements bond directly to the glass and connect to the defrosters side buss bars. A cover is then applied to the buss bars for a finished factory appearance.



Roll on the defroster elements.

Connections

The side buss bars include integral tabs are positioned for easy connection to ThermaSync® defroster controls or directly to existing defroster wiring.



Complete Defrosters

Clear View defrosters include a color coded wire harness, ThermaSync control and switch plus everything needed to install the defroster including illustrated instructions.

Finished Appearance

A cover is applied to the buss bars or a finished factory appearance. Heating elements match the brownish color of factory defrosters and adhere directly to the glass for improved visibility and safe winter driving. No backing is left on the window to fade, crack or yellow over time.

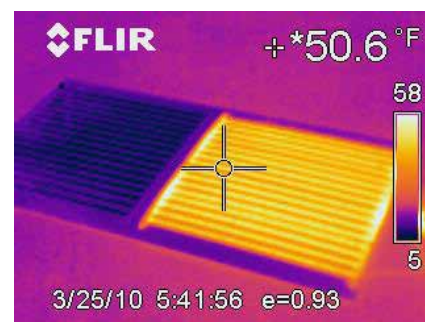


More Performance

The new Clear View II defrosters feature more aggressive bonding technology and adhesion promoters for a new level of durability and heating performance even on the coldest winter days.

New Defroster Options

New ThermaSync defroster controls provide many new options including adjustable timing and one switch defroster control. Available in 12 and 24 volts Clear View defrosters. Now it is easy to install defrosters with proven heating performance and a professional factory look.



Inferred image of van defroster

ThermaSync® Defroster controls with smarts

www.frostfighter.com

More options, less hassle

New ThermaSync® defroster controls are the perfect companion to Clear View II and other defrosters.

They feature an easy to mount defroster switch with indicator light, adjustable automatic shut off timing, power modulation and can be used with the SwitchBoss to control multiple defrosters with a single switch.

With the addition of a Switch Boss, ThermaSync controls can activate several defrosters at once through a single switch making the system ideal for multiple defroster installations like cabs.



ThermaSync Defroster Control and Switch

Power Modulation

ThermaSync Controls can modulate power to the defroster from 3% up to 100%. This feature allows for hundreds of new Clear View II defroster sizes to fit almost any window.

New Voltages

The Clear View II defrosters and ThermaSync controls are available in 12 and 24 volts. Nobody else does that!

ThermaSync Control Operation

Pressing the defrost symbol on the remote switch turns the defroster on. The defroster stays on until the switch is pressed again or the control times out.

The timer can be set to time out from 10 to 160 minutes or can be left on indefinitely depending on the internal jumper settings.

Each control comes with full instructions.

One Switch, Multiple Defrosters

A single switch can activate several defrosters using Switch Boss. This network control is good for cabs and other applications the require several defrosters to be activated from a single switch.



ThermaSync Switch Boss activates several defrosters from a single switch.

Mounting

The ThermaSync control can be secured out of sight under the dash while the defroster switch can be mounted in dash or with the under dash mount.

Installation Options

Clear View II Defrosters and ThermaSync Controls are available independently or with a full installation kit which includes the wire harness, fuse, switch mounting plate, power tap, wire ties, surface cleaner/adhesion promoter and full instructions.



*Complete defroster kit.
Representative photo only. Actual parts may differ.*

See the Clear View Master Catalog which shows all the defroster sizes available.



Planned Products LLC

4699 Nautilus Court South, Suite 201
Boulder, CO 80301-5307

Tel: 303.682.0274
Fax: 303.682.0678
E-mail: info1@frostfighter.com
Web: www.frostfighter.com

New!

Clear View II Van Rear Window Defrosters



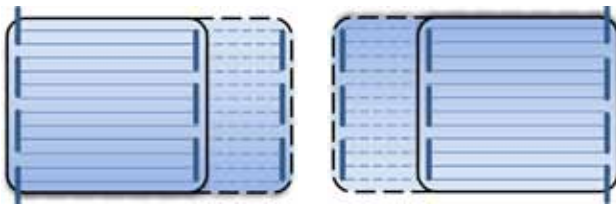
www.frostfighter.com

Technical

Clear View II Electric Defrosters make it easy to install high quality defrosters on Van rear windows.

Van Defroster Layout

Clear View Van defrosters have the power and ground tabs on the same side for easy wiring. The elements are laid out in series and parallel to deliver the resistance needed for optimal window heating.



Defroster Sizes

The defrosters are each 15 inches in height with 12 heating elements. The length can be trimmed between the minimum of 16 inches and a maximum of 24 inches for a custom window fit.

Voltages and Amperage

At the shortest length 14.4 amps and 9.7 at the longest length. The 2640 defrosters are 12 volt systems. Twenty four volt systems are available

Timer Options

Standard automatic off timing is set to 20 minutes with 10, 20, 40, 80, 160 and manual settings.

Switch Boss

The ThermaSync Switch Boss networks the defrosters and is required to operate both defrosters from a single switch.

Instructions

Clear View instructions are fully illustrated and include General Instructions for defroster installation and wiring plus an attachment showing the exact installation of the defroster on the window.

Ordering

Available at our online store or by contacting us directly Clear View II Electric Defrosters make it easy to install high quality defrosters on Van rear windows

What is included

Clear View van defrosters include everything needed to install a complete defroster including the ThermaSync controls, wire harness and installation pack.

Defrosters

Two Clear View 1212-1624-L-VAN defrosters are included, one for each window.

ThermaSync Defroster Controls

Each defroster requires a separate control set to the required modulation.

Switch Boss

The ThermaSync Switch Boss is required to operate both defrosters from a single switch.



Wire Harness

A complete wire harness is included with color coded connectors for easy assembly.

Installation Pack

Includes the fuse and holder, power taps, wire ties, under dash switch mount, extra connectors and adhesion promoter glass cleaner.

All controls are configured at the factory prior to shipment.

Part Number 2640 - Price is \$175.95



Planned Products LLC

4699 Nautilus Court South, Suite 201
Boulder, CO 80301-5307

Tel: 303.682.0274
Fax: 303.682.0678
E-mail: info1@frostfighter.com
Web: www.frostfighter.com