

New!

# Clear View II Truck Cap Window Defrosters



[www.frostfighter.com](http://www.frostfighter.com)

Clear View  
Truck Cap Defrosters



## Truck Cap Rear Window Defrosters

Clear View II Electric Defrosters make it easy to install high quality defrosters on cap and topper rear windows. Clear View Cap Defrosters deliver the heating performance needed to keep cap windows free of snow and ice for safe winter driving.

### Delivered complete

Clear View defrosters include everything needed to install a complete defroster including the ThermaSync defroster control, wire harness and installation pack for full window coverage.

### Spaced for easy application

Clear View self-adhesive heating elements come on pre-spaced rolls for easy and accurate application directly to the window. These heating elements are trimmed to size during installation and match the color of factory defrosters.



ThermaSync Defroster Controls

### Defroster controls with smarts

Clear View defrosters use our ThermaSync defroster controls and switch.

The defroster is connected electrically through the buss bar tabs to the vehicles power and ground, then activated with the automatic ThermaSync defroster control and provide much better thermal performance on the glass.

## Truck Cap Defrosters

Clear View Cap Defrosters reliably melt snow and ice even in the coldest winter conditions.

Now it is easy to install defrosters with proven heating performance and a professional factory look on a wide variety truck toppers and caps.

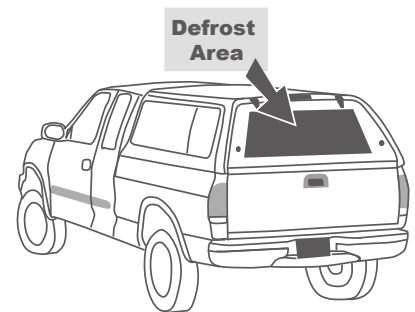
### NEW! Cap Defrosters

The new truck cap defrosters are now available in two sizes to fit nearly any size back glass. These defrosters are easier to install and provide better heating defroster performance.

Clear View defrosters available for..

- ✓ Leer
- ✓ Snug Top
- ✓ Ranch
- ✓ ARE
- ✓ ATC
- ✓ Unicover
- ✓ Century
- ✓ most others!

### Truck Cap and Topper defrosters



Defrost truck cap rear windows



**Planned Products LLC**  
 4699 Nautilus Court S.  
 Suite 201  
 Boulder, CO 80301  
 Tel: 303.682.0274  
 E-mail: [info@frostfighter.com](mailto:info@frostfighter.com)  
 Web: [www.frostfighter.com](http://www.frostfighter.com)

# Frost Fighter® Clear View II Defrosters made easy

[www.frostfighter.com](http://www.frostfighter.com)

## Defrosters for Truck Toppers and Cap Rear Windows

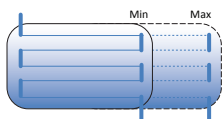


Clear View defrosters keep the back windows clear in winter conditions

Clear View Cap Defrosters deliver the heating performance needed to keep rear windows free of snow and ice for safe winter driving. Cost effective and easy to install, these new defrosters bond directly to the window to match the heating performance of factory installed defrosters, melting snow and ice in minutes.

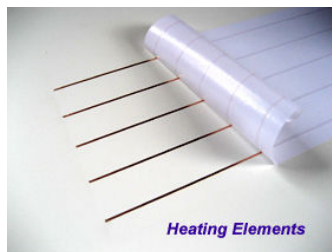
### How Clear View defrosters work

Defrosting is accomplished through contact between the Clear View elements and the window. The defroster is connected electrically through the buss bar tabs and activated with the automatic ThermaSync defroster control and switch.



### Easy Application

The heating elements come on pre-spaced rolls which are trimmed to length for a custom fit. The self adhesive heating elements bond directly to the glass and connect to the defrosters side buss bars. A cover is then applied to the buss bars for a finished factory appearance.



Roll on the defroster elements.

### Connections

The side buss bars include integral tabs are positioned for easy connection to ThermaSync® defroster controls or directly to existing defroster wiring.



### Complete Defrosters

Clear View defrosters include a color coded wire harness, ThermaSync control and switch plus everything needed to install the defroster including illustrated instructions.

### Finished Appearance

A cover is applied to the buss bars or a finished factory appearance. Heating elements match the brownish color of factory defrosters and adhere directly to the glass for improved visibility and safe winter driving. No backing is left on the window to fade, crack or yellow over time.



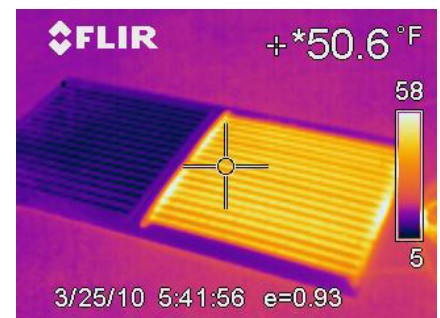
### More Performance

The new Clear View II defrosters feature more aggressive bonding technology and adhesion promoters for a new level of durability and heating performance even on the coldest winter days.

### New Defroster Options

New ThermaSync defroster controls provide many new options including adjustable timing and one switch defroster control.

Available in 12 and 24 volts Clear View defrosters  
Now it is easy to install defrosters with proven heating performance and a professional factory look.



Inferred image of van defroster

# ThermaSync® Defroster controls with smarts

[www.frostfighter.com](http://www.frostfighter.com)

## More options, less hassle

New ThermaSync® defroster controls are the perfect companion to Clear View II and other defrosters.

They feature an easy to mount defroster switch with indicator light, adjustable automatic shut off timing, power modulation and can be used with the SwitchBoss to control multiple defrosters with a single switch.

With the addition of a Switch Boss, ThermaSync controls can activate several defrosters at once through a single switch making the system ideal for multiple defroster installations like cabs.



*ThermaSync Defroster Control and Switch*

## Power Modulation

ThermaSync Controls can modulate power to the defroster from 3% up to 100%. This feature allows for hundreds of new Clear View II defroster sizes to fit almost any window.

## New Voltages

The Clear View II defrosters and ThermaSync controls are available in 12 and 24 volts. Nobody else does that!

## ThermaSync Control Operation

Pressing the defrost symbol on the remote switch turns the defroster on. The defroster stays on until the switch is pressed again or the control times out.

The timer can be set to time out from 10 to 160 minutes or can be left on indefinitely depending on the internal jumper settings.

Each control comes with full instructions.

## One Switch, Multiple Defrosters

A single switch can activate several defrosters using Switch Boss. This network control is good for cabs and other applications the require several defrosters to be activated from a single switch.



*ThermaSync Switch Boss activates several defrosters from a single switch.*

## Mounting

The ThermaSync control can be secured out of sight under the dash while the defroster switch can be mounted in dash or with the under dash mount.

## Installation Options

Clear View II Defrosters and ThermaSync Controls are available independently or with a full installation kit which includes the wire harness, fuse, switch mounting plate, power tap, wire ties, surface cleaner/adhesion promoter and full instructions.



*Complete defroster kit. Representative photo only. Actual parts may differ.*

See the Clear View Master Catalog which shows all the defroster sizes available.



## Planned Products LLC

4699 Nautilus Court South, Suite 201  
Boulder, CO 80301-5307

Tel: 303.682.0274  
Fax: 303.682.0678  
E-mail: [info1@frostfighter.com](mailto:info1@frostfighter.com)  
Web: [www.frostfighter.com](http://www.frostfighter.com)

New!

# Clear View II Truck Cap Rear Window Defrosters



[www.frostfighter.com](http://www.frostfighter.com)

## Technical

Clear View II Electric Defrosters make it easy to install high quality defrosters on truck topper and cap rear windows.

### Cap Defroster Layout

Clear View Cap defrosters have the power and ground tabs positioned on the side buss bars. The elements are laid out in series and parallel to deliver the resistance needed for optimal window heating.



#### Tab Location

The Clear View layout requires a tab in the upper left and lower right of the defroster. The wire leads are held in place by surface clamps to the top hinge line and then looped to allow easy opening.

#### Clear View Cap Defroster Sizes

##### 1209-4567-CAP

The defroster is **11.25 inches in height** with 9 heating elements. The length can be trimmed between the minimum of 45 inches and a maximum of 67 inches.

##### 1212-4567-CAP

The defroster is **15 inches in height** with 12 heating elements. The length can be trimmed between the minimum of 45 inches and a maximum of 67 inches.

#### Voltages and Amperage

The typical voltage 12-14. The amperage is determined by the design of the defroster and the length with typical values in the 10-20 amp range.

#### Timer Options

Standard automatic off timing is set to 20 minutes

#### Instructions

Clear View instructions are fully illustrated and include General Instructions for defroster installation and wiring plus an attachment showing the exact installation of the defroster on the window.

## What is included

Clear View Cap Defrosters include everything needed to install the defroster including the ThermaSync control, wire harness and installation pack.

#### Defrosters

Complete Clear View defroster is included.

#### ThermaSync Defroster Controls

All controls include a LED defroster indicator switch and are configured at the factory prior to shipment.



#### Wire Harness

A complete wire harness is included with color coded connectors for easy assembly.

#### Installation Pack

Includes the fuse and holder, power taps, wire ties, under dash switch mount, extra connectors and adhesion promoter glass cleaner.

#### Part Numbers and Ordering

1209-4567-CAP

The defroster is 11.25 inches in height with 9 heating elements. \$71.20 Complete Defroster

1212-4567-CAP

The defroster is 15 inches in height with 12 heating elements. \$75.70 Complete Defroster

**Clear View Cap Defrosters are available online at our website or by calling our friendly staff at the number listed below.**

Tel: 303.682.0274

Web: [www.frostfighter.com](http://www.frostfighter.com)



#### Planned Products LLC

4699 Nautilus Court South, Suite 201  
Boulder, CO 80301-5307

Tel: 303.682.0274

Fax: 303.682.0678

E-mail: [info1@frostfighter.com](mailto:info1@frostfighter.com)

Web: [www.frostfighter.com](http://www.frostfighter.com)