

Clear View II Truck Defrosters



www.frostfighter.com



Defrosters for the back glass of trucks

Clear fog, snow and ice on truck rear windows

If you live in snow country you know nice a rear window defroster can be on those cold winter mornings or when the going gets tough in bad conditions.

But what to do if your truck did not come with rear defrost?

Clear View defrosters are easy to install rear window defrosters for Ford, Chevrolet, Toyota, and Dodge pickups plus all other makes and models. Clear View Truck defrosters provide factory defroster performance with an attractive finished look.

Clear View Pickup Truck Rear Defrosters

The defroster elements come on pre spaced rolls for perfect alignment and are trimmed to the window size for a custom fit. The heating elements bond aggressively to the glass and are similar in color to factory elements.



Made here in Colorado where we know winter, Clear View defrosters come as complete ready to install units including our ThermaSync defroster timer

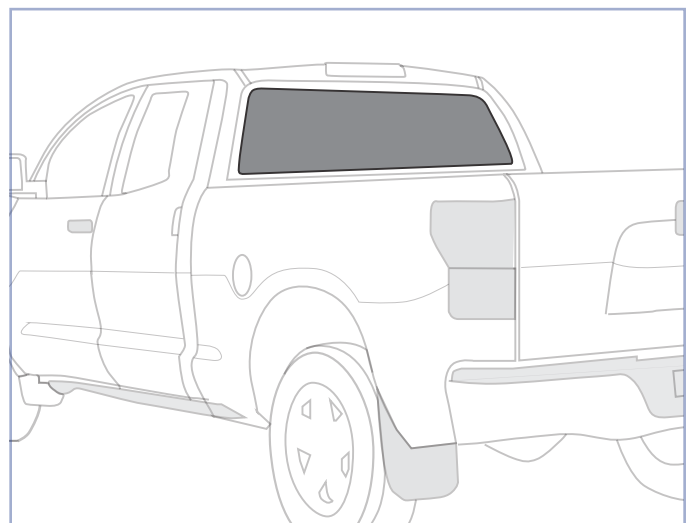
control and activation switch with defroster symbol and indicator light.

Not for use on segmented or sliding back windows.

Frost Fighter and ThermaSync are Registered Trademarks of Planned Products LLC. All rights reserved. © 2012 Planned Products LLC

Truck Back Window Defrosters

Easy to install defrosters for safe winter driving



Easy to install defrosters for pickup truck back glass



Planned Products LLC

4699 Nautilus Court S.
Suite 201

Boulder, CO 80301

Tel: 303.682.0274

E-mail: info1@frostfighter.com

Web: www.frostfighter.com

Frost Fighter® Clear View II Defrosters made easy

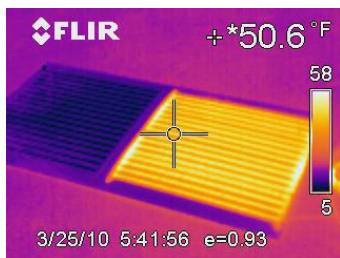
www.frostfighter.com

Defrosters for the back glass of trucks



Clear View defrosters clear back glass of fog, snow and ice even when the going gets tough.

Clear View II defrosters provide enhanced heating in the rear window. Cost effective and easy to install, these new defrosters bond directly to the window to match the heating performance of factory installed defrosters, melting snow and ice in minutes.



Inferred image of front wiper defroster

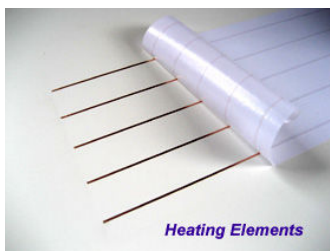
How they work

Defrosting is accomplished through contact between the Clear View elements and the window. The defroster is connected electrically through the buss bar tabs and activated

with the ThermaSync defroster control and switch.

Application

The heating elements come on pre-spaced rolls which are trimmed for a custom fit. The self adhesive heating elements bond directly to the glass and connect to the defrosters side buss bars. A cover is then applied to the buss bars for a finished factory appearance.



Roll on the defroster elements.

Ready to Install, Complete Defrosters

Delivered ready to install, Clear View II Defrosters include the ThermaSync defroster control and switch, installation pack including color coded wire harness, under dash mount, fuse, fuse holder, mounting screws, connectors and other installation accessories including illustrated instructions.

Connections

The side buss bars include integral tabs are positioned for easy connection to ThermaSync® defroster controls.

Finished Appearance

A cover is applied to the buss bars or a finished factory appearance. Heating elements match the brownish color of factory defrosters and adhere directly to the glass for improved visibility and safe winter driving. No backing is left on the window to fade, crack or yellow over time.



More Performance

Clear View II defrosters feature more aggressive bonding technology for a new level of durability and heating performance on the coldest winter days.

New Defroster Options

New ThermaSync defroster controls provide many new options including adjustable timing and one switch control of many defrosters. Clear View defrosters are available in 12 and 24 volt.



Planned Products LLC

4699 Nautilus Court S.

Suite 201

Boulder, CO 80301

Tel: 303.682.0274

E-mail: info1@frostfighter.com

Web: www.frostfighter.com

ThermaSync® Defroster controls with smarts

www.frostfighter.com

More options, less hassle

New ThermaSync® defroster controls are the perfect companion to Clear View II and other defrosters.

They feature an easy to mount defroster switch with indicator light, adjustable automatic shut off timing, power modulation and can be used with the SwitchBoss to control multiple defrosters with a single switch.

With the addition of a Switch Boss, ThermaSync controls can activate several defrosters at once through a single switch making the system ideal for multiple defroster installations like cabs.



ThermaSync Defroster Control and Switch

Power Modulation*

ThermaSync Controls can modulate power to the defroster from 3% up to 100%. This feature allows for hundreds of new Clear View II defroster sizes to fit almost any window.

New Voltages

The Clear View II defrosters and ThermaSync controls are available in 12 and 24 volts. Nobody else does that!

ThermaSync Control Operation

Pressing the defrost symbol on the remote switch turns the defroster on. The defroster stays on until the switch is pressed again or the control times out.

The timer can be set to time out from 10 to 160 minutes or can be left on indefinitely depending on the internal jumper settings. Each control comes with full instructions.

* Modulation and timing options require 2812/2824 ThermaSync Controls

Frost Fighter and ThermaSync are registered Trademarks of Planned Products LLC.

One Switch, Multiple Defrosters

A single switch can activate several defrosters using Switch Boss. This network control is good for cabs and other applications the require several defrosters to be activated from a single switch.



ThermaSync Switch Boss activates several defrosters from a single switch.

Mounting

The ThermaSync control can be secured out of sight under the dash while the defroster switch can be mounted in dash or with the under dash mount.

Installation Options

Clear View II Defrosters and ThermaSync Controls are available independently or with a full installation kit which includes the wire harness, fuse, switch mounting plate, power tap, wire ties, surface cleaner/adhesion promoter and full instructions.



Complete defroster kit. Representative photo only. Actual parts may differ.

See the Clear View Master Catalog which shows all the defroster sizes available.



Planned Products LLC

4699 Nautilus Court South, Suite 201
Boulder, CO 80301-5307

Tel: 303.682.0274
Fax: 303.682.0678
E-mail: info1@frostfighter.com
Web: www.frostfighter.com